

# Evidence

## Forensic Disk Imager

## Proven & Fast Securing of Evidence



### Description

Miray Evidence creates forensic images to secure and analyse evidence. It has been especially engineered with a focus on fast image creation of hard disks, SSDs, USB disks etc., as well as on intuitive operation by support staff.

### Highlights

- ▶ E01, Ex01, AFF, RAW, Smart
- ▶ SHA-1/256/512, MD5, CRC
- ▶ Data reconciliation
- ▶ Checksum calculation

Forensic Images

Checksums and Compression

Extensive PDF Report

Even Without Windows

All File Systems and OS



## Dependable Securing of Forensic Disk Images at Unrivaled Speed

At the heart of Miray Evidence is CopyEngine – our especially developed algorithm, which has allowed our products to become some of the fastest and most efficient image solutions in the world. In addition, the entire image creation process runs easily and efficiently thanks to the optimized user interface.

## Forensic Image

Create forensic images to secure, analyse and process evidence with other tools you'll find in other traditional forensic file formats, including verification, checksums and PDF reports.

## 1:1 Raw Data Formats

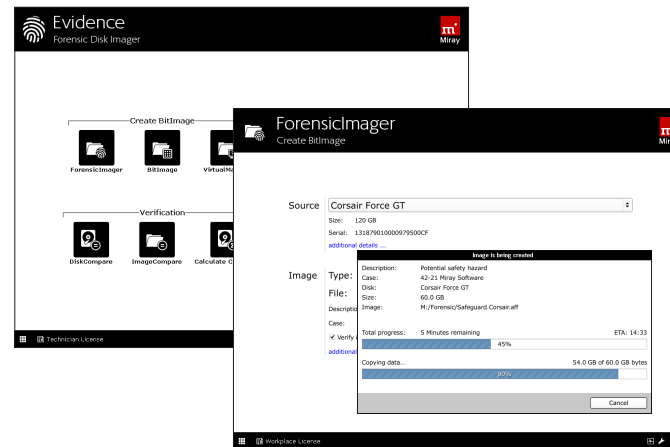
In addition, images can be created in the formats RAW/DD, BitImage (with compression optional), as well as various virtual machine formats. These are also bit-wise identical to the master.

## VM Image & SmartImage

For special use cases, file system-oriented formats such as VMDK, VHD, VHDX and VDI are available, as well as SmartImage. These formats are especially efficient when it comes to storage space and time requirements, if the legal securing of evidence is not a priority.

## Our Own Operating System

By using its own, specialized operating system, Miray Evidence can bypass performance limitations of traditional operating systems and allows to create images without starting the installed operating system.



## Graphical User Interface

The UI was especially developed to create forensic images. It guides the user efficiently while saving time. Therefore, the configuration is also simple and intuitive.

## Extensive Software Features

The software package includes additional tools for reconciling disks and existing images, separate checksum calculations, etc.

## Checksums and Verification

Data verification and various checksums calculations are available to ensure imperative reliability, evidence security and verifiability of the forensic work.

## Compatibility

### Evidence/S

- Self-booting (Symbi)
- PC or Intel Mac starting at 500 MHz, 512 MB RAM
- SATA/IDE, NVMe/M.2, USB 2+3, Firewire, Software RAID

### Evidence/W

- Use with Windows (.exe)
- Starting at Windows XP or Server 2003
- Mass storage supported by Windows

### Evidence/L

- Self-booting (Linux)
- Meets requirements for the standard Linux kernel
- Mass storage supported by the Linux kernel

## File Formats

- Forensic formats: AFF, E01, Ex01
- Checksums: SHA-1, SHA-256, SHA-512, MD5, CRC32
- VM Image Formats: VMDK, VHD, VHDX, VDI
- Proprietary Formats: SmartImage, BitImage
- File systems: NTFS, FAT, ExFAT, HFS+

Miray Software AG  
Gaissacher Str. 18  
81371 Munich  
GERMANY

Homepage: [miray-software.com](http://miray-software.com)  
Product page: [miray-software.com/Evidence](http://miray-software.com/Evidence)  
Online shop: [miray-software.com/Shop](http://miray-software.com/Shop)  
Contact: [mail@miray.de](mailto:mail@miray.de)